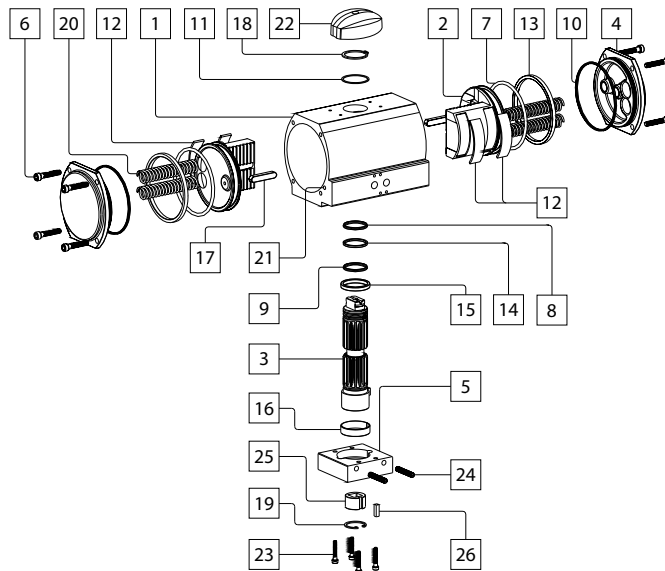


## Part List for Pneumatic Actuator Type 2



Ref.no.	Description	Quantity	Material	
			Standard	CNI
1	Body	1	Alum. Anodized	Alum. CNI treated
2	Piston	2	Alum.	Alum. Anodized
3	Driveshaft	1	Ni Plated Steel + Teflon	Ni Plated Steel + Teflon
4	End Cap	2	Alum. Polyester Coated	Alum. CNI treated
5	Body Adaptor	1	Alum. Anodized	CNI treated
6	End Cap Bolt	8	Stainless Steel	Stainless Steel
7	Piston O-ring	2	Buna Nitril	Buna Nitril
8	Driveshaft upper O-ring	1	Buna Nitril	Buna Nitril
9	Driveshaft lower O-ring	1	Buna Nitril	Buna Nitril
10	End Cap O-ring	2	Buna Nitril	Buna Nitril
11	Washer	1	POM	POM
12	Wear Pads	4	POM	POM
13	Backup Bearing	2	POM	POM
14	Driveshaft upper Bearing	1	POM	POM
15	Driveshaft lower Bearing	1	POM	POM
16	Body Adaptor Bearing	1	POM	POM
17	Guide Bar	2	Steel	Steel
18	Circlip upper	1	Ni plated Steel	Ni plated Steel
19	Body Adaptor Circlip	1	Ni plated Steel	Ni plated Steel
20	Spring	4	SiCr	SiCr
21	Ball Bearing	2	NBR	NBR
22	Position Indicator	1	POM	POM
23	Body Adaptor Bolts	4	Stainless Steel	Stainless Steel
24	Stop Adjustment Screws	2	Stainless Steel	Stainless Steel
25	Insert	1	Stainless Steel	Stainless Steel
26	Insert Sleeve Key	1	Stainless Steel	Stainless Steel