

## Manual Gear Override (MGO) - Technical Data, Summary

### Temperature Range

- -30 to +80 C (Standard execution)
- -20 to +140 C (High temp)
- -50 to +60 C (Arctic temperature)

### Material standard

- Anodized Aluminium, Black.
- CNI, Chemically Nickel Impregnated.
- Other treatments upon request.

### Movement

- 0-90 Degrees

### End Stop Adjustment

- Dual end stop adjustment .

### Sizes

- MGE300, MGE600, MGE1200 & MGE200

### Torque Output

- 300 to 2000 Nm



The TruTorq® MGO actuator coupling was designed to allow all TruTorq actuators to work perfectly with any valve or mechanism that requires a quarter turn.

They are even a perfect combination with all other brands of pneumatic actuators.

The **override** contains double independent travel stop adjustments allowing  $\pm 5^\circ$  for open and close position.

The **declutch** handle is securely held in place by a spring loaded lock pin to ensure gear engagement or disengagement. The body is from aluminum solid bar and anodized

(other treatments available on request).



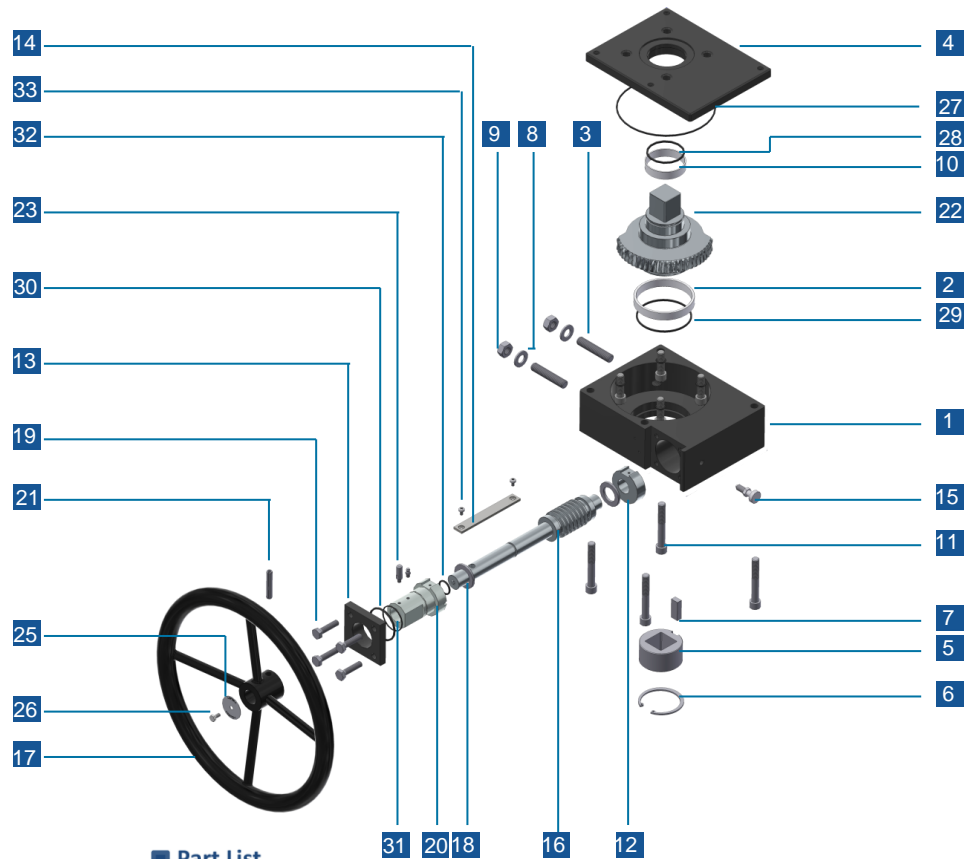
**All MGO** series actuators are made with high quality materials and precise machining to guarantee maximum service and reliability. They are excellent in design, functionality and reliability.

**MGO series** adapts to the automation requirements of today's valves using a release mechanism for double-acting actuators and no-friction spring-return actuators.

**MGO gears** are designed for superior performance with quarter-turn valves or mechanisms so as to be equipped with pneumatic actuators and require manual operation.

**For robust** and reliable applications, the units are built with sufficient strength and operational integrity to offer unsurpassed performance in virtually any operating environment.

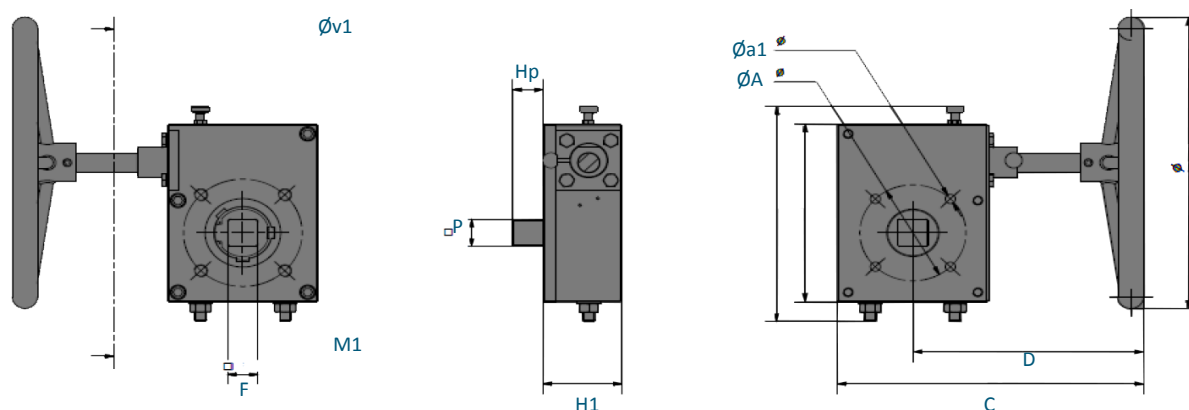
## MGO - Part List



### Part List

Ref No	Description	Quantity	Material Std Unit
1	Gear housing	1	Aluminum
2	Worm wheel bearing	1	POM
3	End stop adjustment screws	2	Stainless Steel
4	Cover	1	Aluminum
5	Insert	1	Stainless Steel
6	Circlip	1	Stainless Steel
7	Insert sleeve key	1	steel
8	Spring washer	2	Stainless Steel
9	Nuts	2	Stainless Steel
10	Worm wheel bearing	1	POM
11	Fixing cover screws	4	Stainless Steel
12	Back sleeve	1	Carbon steel
13	Closing flange	1	Aluminum
14	Sleeves connection plates	1	Stainless Steel
15	Engaging lever	1	Polymer/stainless steel
16	Worm gear	1	Carbon steel
17	Hand wheel	1	Steel
18	Rolling bearing	2	Stainless Steel
19	Closing flange screws	4	Stainless Steel
20	Front sleeve	1	Carbon steel
21	Hand wheel pin	1	steel
22	Worm wheel	1	Carbon steel
23	Clutching/declutching lever	1	Polymer/stainless steel
24	Nuts	1	Stainless Steel
25	Direction indicator plate	1	Stainless Steel
26	Fixing plate screw	1	Stainless Steel
27	Cover O-ring	1	NBR
28	Worm wheel O-ring	1	NBR
29	Worm wheel O-ring	1	NBR
30	Flange O-ring	1	NBR
31	Flange bearing	1	POM
32	Worm gear O-ring	1	NBR
33	Plate screws	2	Stainless Steel

## MGO - Dimensions



### ■ Dimensions

METRIC	ISO5211	VALVE SIDE			ACTUATOR SIDE					
		F	Øv1	M1	ISO5211	P	ØA	Øa1	C	D
MGE300	F07	*	70	M8	F07	14	70	8,5	229	180
MGE600	F10/F12	*	102	M10	F10	22	102	10,5	279	205
MGE1200	F12/F14	*	125	M12	F12	27/36	125	12,5	362	273
MGE2000	F14	*	140	M16	F12	27/36	125	12,5	432	308

\*Depending on insert sleeve used

Torque	INPUT TORQUE (Nm)	OUTPUT TORQUE (Nm)	Overall Weight (kg)	Handwheel (mm)
MGE300	35	300	4,3	200
MGE600	45	600	7,7	250
MGE1200	70	1200	15,8	350
MGE2000	70	2000	24,2	350

Dimensions for gears in stock, other executions on request